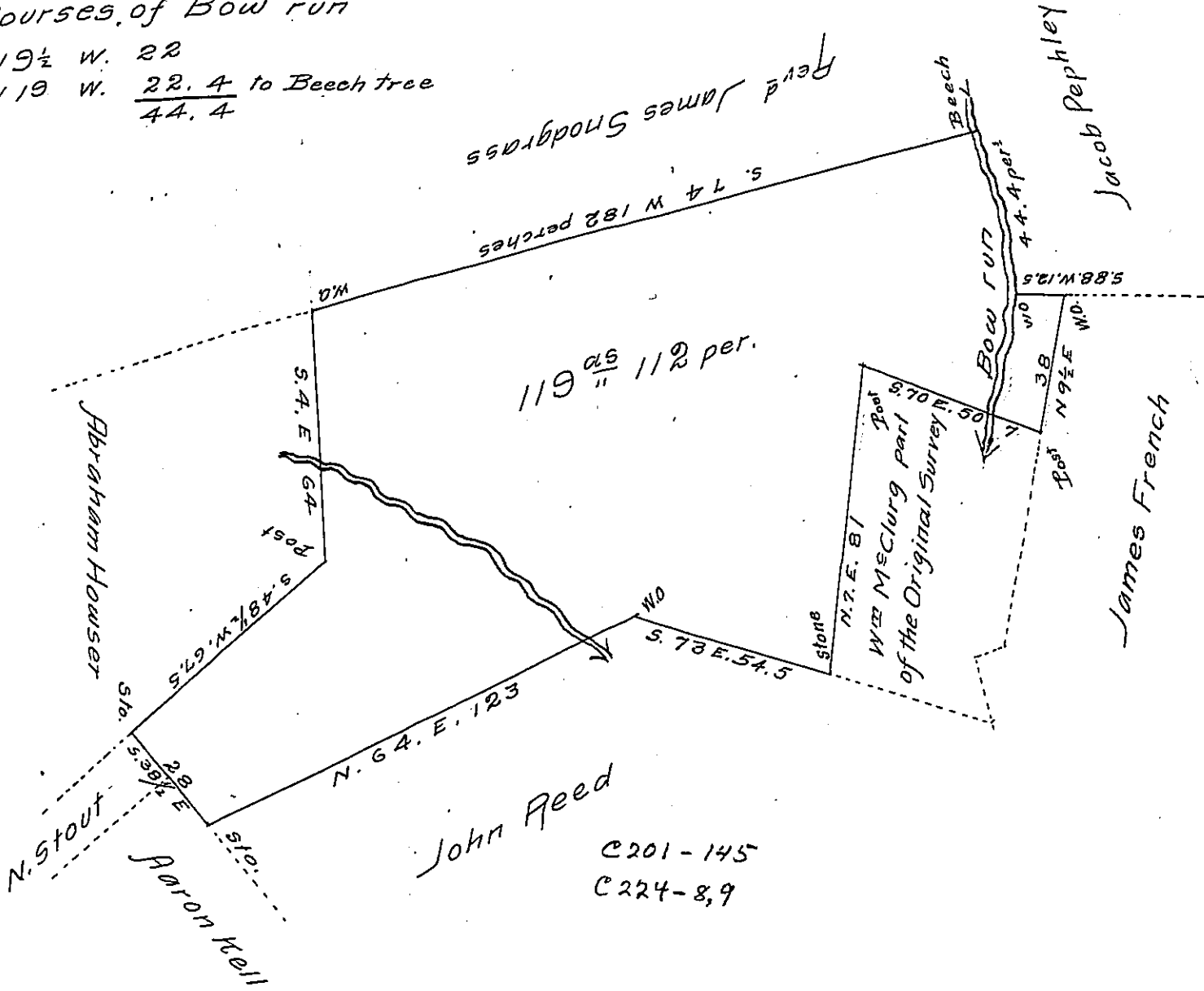


Courses of Bow run

N 9 1/2 W. 22  
N 19 W. 22.4 to Beech tree  
44.4



John Reed

C201-145  
C224-8,9

Surveyed the 11<sup>th</sup> day of April 1818 for Abraham Howser the above described tract of Land situate in W. Hanover Township Dauphin County containing One hundred nineteen acres 112 perches and allowance of six per Cent. part of 133<sup>acs</sup> and all<sup>cs</sup> on Warrant of John Sharp dated the 30<sup>th</sup> August 1739

Thomas Smith D.S.

To Jacob Spangler Esquire

Surveyor General Pa

IN TESTIMONY that the above is a copy of the original remaining on file in the Department of Internal Affairs of Pennsylvania, made conformably to an Act of Assembly approved the 16th day of February 1833, I have hereunto set my hand and caused the Seal of said Department to be affixed at Harrisburg, this twenty-eighth day of February 1907

*Isaac R. Brown*  
Secretary of Internal Affairs.